



# canflex (USA), Inc.

## "100 Tonne Crane Test Water Bag"



200 Tonne Load Test

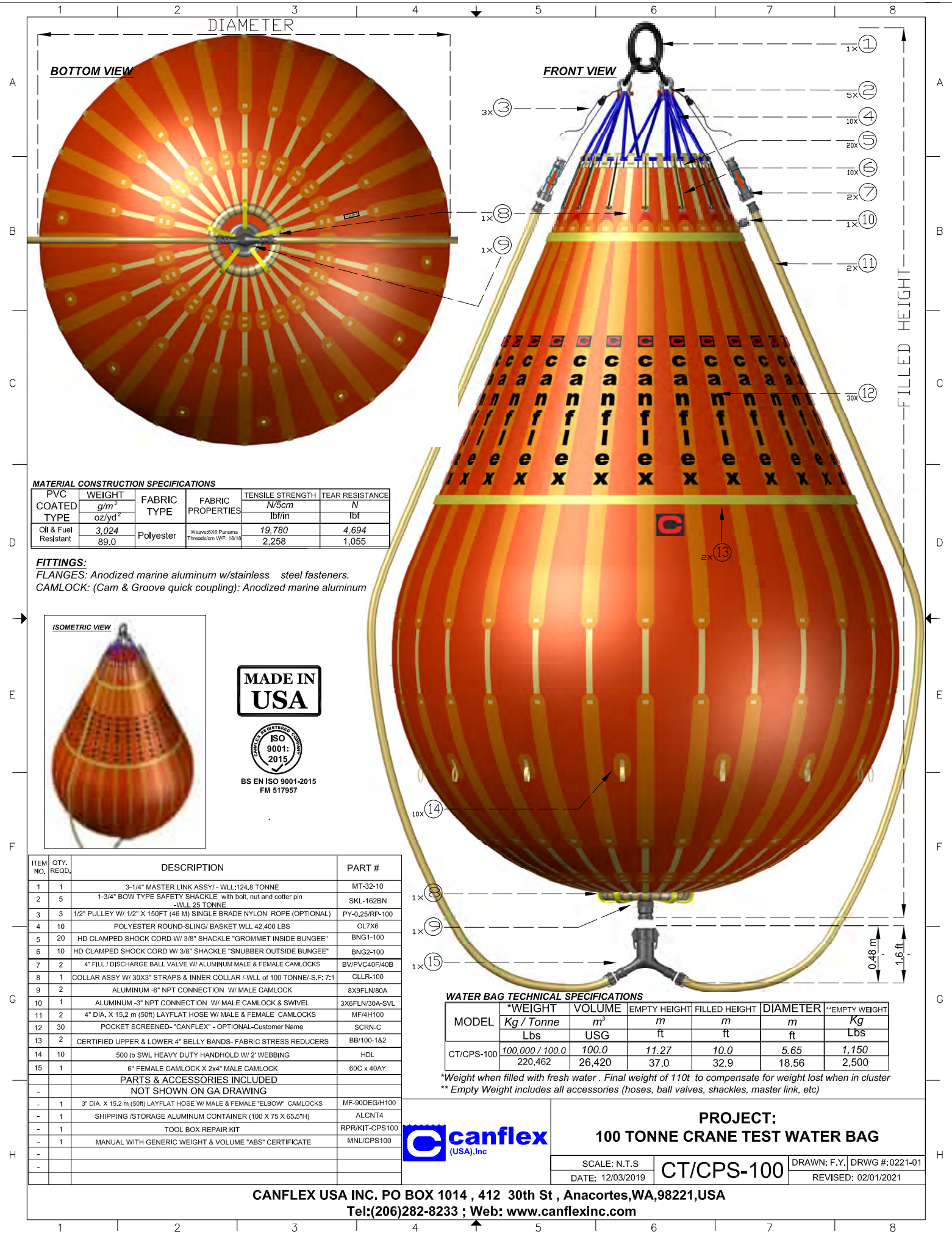


Full Capacity:  
110 Metric Tonne

- *Multiple clusters of up to 300t from a single hook (3 x CT/CPS-100) can be used for larger test loads.*
- *Foldable for easy storage and transportation.*
- *Used worldwide for ship-deck cranes, offshore rigs and general purpose cranes.*
- *Water Bag 3D Model FEA (Finite Element Analysis) Force & Stress*
- *All Canflex Crane Test Water Bags maintain a minimum 7:1 Safety Factor of the operational water test bag's Working Load.*
- *Test multiple crane sizes with one fluid weight*
- *Final weight of 110 Tonne to compensate for weight lost when in cluster*



Aerial View at  
Full Capacity



**MATERIAL CONSTRUCTION SPECIFICATIONS**

PVC COATED TYPE	WEIGHT g/m <sup>2</sup> oz/yd <sup>2</sup>	FABRIC TYPE	FABRIC PROPERTIES	TENSILE STRENGTH N/5cm lbf/in	TEAR RESISTANCE N lbf
Oil & Fuel Resistant	3,024 89,0	Polyester	Waves 83X3 Panama Threads/cm W/F: 18/16	19,780 2,258	4,694 1,055

**FITTINGS:**  
**FLANGES:** Anodized marine aluminum w/stainless steel fasteners.  
**CAMLOCK:** (Cam & Groove quick coupling): Anodized marine aluminum



**MADE IN USA**



BS EN ISO 9001:2015  
FM 517957

ITEM NO.	QTY. REQD.	DESCRIPTION	PART #
1	1	3-1/4" MASTER LINK ASSY/ - WLL:124.8 TONNE	MT-32-10
2	5	1-3/4" BOW TYPE SAFETY SHACKLE with bolt, nut and cotter pin -WLL 25 TONNE	SKL-162BN
3	3	1/2" PULLEY W/ 1/2" X 150FT (46 M) SINGLE BRADE NYLON ROPE (OPTIONAL)	PY-0,25/RP-100
4	10	POLYESTER ROUND-SLING/ BASKET WLL 42,400 LBS	OL7X6
5	20	HD CLAMPED SHOCK CORD W/ 3/8" SHACKLE "GROMMET INSIDE BUNGEE"	BNG1-100
6	10	HD CLAMPED SHOCK CORD W/ 3/8" SHACKLE "SNUBBER OUTSIDE BUNGEE"	BNG2-100
7	2	4" FILL / DISCHARGE BALL VALVE W/ ALUMINUM MALE & FEMALE CAMLOCKS	BV/PVC40F/40B
8	1	COLLAR ASSY W/ 30X3" STRAPS & INNER COLLAR -WLL of 100 TONNE/-S,F; 7:1	CLR-100
9	2	ALUMINUM -6" NPT CONNECTION W/ MALE CAMLOCK	8X9FLN/80A
10	1	ALUMINUM -3" NPT CONNECTION W/ MALE CAMLOCK & SWIVEL	3X8FLN/30A-SVL
11	2	4" DIA. X 15.2 m (50ft) LAYFLAT HOSE W/ MALE & FEMALE CAMLOCKS	MF/4H100
12	30	POCKET SCREENED-"CANFLEX" - OPTIONAL-Customer Name	SCRN-C
13	2	CERTIFIED UPPER & LOWER 4" BELLY BANDS- FABRIC STRESS REDUCERS	BB/100-1&2
14	10	500 lb SWL HEAVY DUTY HANDHOLD W/ 2" WEBBING	HDL
15	1	6" FEMALE CAMLOCK X 2x4" MALE CAMLOCK	60C x 40AY
<b>PARTS &amp; ACCESSORIES INCLUDED</b>			
<b>NOT SHOWN ON GA DRAWING</b>			
-	1	3" DIA. X 15.2 m (50ft) LAYFLAT HOSE W/ MALE & FEMALE "ELBOW" CAMLOCKS	MF-90DEG/H100
-	1	SHIPPING /STORAGE ALUMINUM CONTAINER (100 X 75 X 65.5")	ALCNT4
-	1	TOOL BOX REPAIR KIT	RPRKIT-CPS100
-	1	MANUAL WITH GENERIC WEIGHT & VOLUME "ABS" CERTIFICATE	MNL/OPS100

**WATER BAG TECHNICAL SPECIFICATIONS**

MODEL	*WEIGHT	VOLUME	EMPTY HEIGHT	FILLED HEIGHT	DIAMETER	**EMPTY WEIGHT
	Kg / Tonne Lbs	m <sup>3</sup> USG	m ft	m ft	m ft	Kg Lbs
CT/CPS-100	100,000 / 100.0 220,462	100.0 26,420	11.27 37.0	10.0 32.9	5.65 18.56	1,150 2,500

\*Weight when filled with fresh water . Final weight of 110t to compensate for weight lost when in cluster  
 \*\* Empty Weight includes all accessories (hoses, ball valves, shackles, master link, etc)



**PROJECT:**  
**100 TONNE CRANE TEST WATER BAG**

SCALE: N.T.S	<b>CT/CPS-100</b>	DRAWN: F.Y., DRWG #:0221-01 REVISED: 02/01/2021
DATE: 12/03/2019		

**CANFLEX USA INC. PO BOX 1014 , 412 30th St , Anacortes,WA,98221,USA**  
**Tel:(206)282-8233 ; Web: www.canflexinc.com**