

CANFLEX MODEL CRT-1500 Rectangular Shaped Tank for Transport on MTRV or LVSF Vehicles

1.0 Introduction

The CRT-1500 is a Canflex Rectangular shape Tank “CRT” designed to be placed on a flatbed configuration of a MTRV or LVSF vehicle.

The CRT primary function is to store and dispense fuel.

This bladder has a tie down harness to secure the bladder to the truck’s bed, a lateral strap webbing harness integrated on the the bladder and an internal baffling system in both longitudinal and radial directions.



2.0 Fuel rated Rectagular shaped Bladder – CRT-1500

The material used for the fabrication of the Canflex Rectangular shaped Tank (CRT) meets the requirements for containment of hydrocarbons / Diesel Fuel, Oil Spill per MIL-PRF-32233. This fabric has a total weight of 45.0 oz/sq. yd. (1530 g/ m²), with the strength characteristics shown in Table-2 below. All seams used to construct the CRT are R/F welded with a 2.5" and 4" die. **No sewing or gluing shall be used.** The resulting seam strength of

the strength of the parent fabric.

for CANFLEX “Rectangular Shaped

Filled
Dimension

Dry weight w/o
accessories

Aprox. Weight

W L H
m m M Kg

inches inches Inches Lb

1.72 5.48 0.61 181

68 216 24 400

Welded)

ast anodized marine grade aluminum. Nuts, bolts, and
e of stainless steel. The fittings are bolted through the
marine grade aluminum backing plate. Each fitting is
iameter than the outside diameter of the particular fitting

camlok, located at the lower edge of the tank.

Connection

/w female camlok, located across the top of the tank.

longitudinal direction of the tank.

Testing straps

at consists of 10 test strips (2"x8") made of the same

The strips are welded on a rectangular patch, which is

of the fabric and weld strength over time.

412-30th St, Anacortes, WA 98221

206-8233 | salesteam@canflexinc.com | www.canflexinc.com

**Table 2 - Material Strength Results
CANFLEX CFL4590NESU**

1.0 BASE FABRIC

1.1 Base Fabric Weight	14 oz/yd ²	476 g/m ²
1.2 Fiber / Style	Nylon / Style 90	

2.0 COATED FABRIC

2.1 Total Weight	45 <u>+2</u> oz/yd ²	1530 <u>+68</u> g/m ²
2.2 Coating Type	Urethane	
2.3 Coating Distribution	50/50	
2.4 Sealing Properties	<input checked="" type="checkbox"/> Dielectric	<input checked="" type="checkbox"/> Thermal

3.0 MATERIAL PROPERTIES

	<u>Standard</u>	<u>Metric</u>	ASTM TEST METHODS
3.1 Tensile Strength, 1" Strip			
Warp	700 lbs	3,110 N	D751-B
Fill	650 lbs	2,890 N	
3.2 Tear Strength, Tongue			
Warp	55 lbs	245 N	D751-B (mod)
Fill	55 lbs	245 N	
3.3 Puncture, Screwdriver	225 lbs	1,000 N	D751
3.4 Ply Adhesion	40 lbs/2 in	178 N/5 cm	D751 (mod)
3.5 Adhesion, RF	40 lbs/in	70 N/cm	D751
3.6 Adhesion, Thermal	40 lbs/in	70 N/cm	D751
3.7 Low Temp	-50 °F	-46 °C	D2136
3.8 High Temp, Cont/Interm.	160 / 180 °F	71 / 82 °C	D1204

Comments: This product designed for primary containment hydrocarbons per / MIL-PRF-32233

4.0 List of all unattached accessories included with the Tank

- 1 X 2" x 90° elbow female x male camlok connection.
- 1 X 2" ball valve w/ female & male camlock conn. with cap, to attach to above elbow.
Purpose: Filling / Offloading
- 1 X Spark /Flame Arrestor with 2" x 10" aluminum anodized pipe , in accordance with MIL specs. It is located at center top of the tank.
Purpose: Spark Arrestor/ Pressure release vent.
- 1 X 2" ball valve w/ male & female camlock conn. with plug, to attach to above spark arrestor / vent. **Purpose: Filling / Offloading**
- 2 x circumferential polyester webbing straps on the longitudinal direction of the tank
Purpose: Added longitudinal strenght around the tank
- 2 X 5/8" Safety shackle with bolt & cotter pin
Purpose: Hold webbing straps mentioned above
- Internal baffles in the width (4 x radial) & length (2 x longitudinal) direction of the tank.
Purpose: To reduce sloshing / dumping of fluid while transport
- 1 x Restrain System consists of 6" diameter SS "O" rings with 3" webbing straps with soft eye ends at ends.
- One maintenance kit that contains following items:
 - 1 x Tool Box (for the 4 units)
 - 1 x 8oz Can of Patch Cement with MSDS;(Not available if Air Freight)
 - 2 x 10" circles of coated bladder material;
 - 4 x 7" circles of coated bladder material;
 - 1x roller;
 - 1x knife;
 - 1 x Operational Guidelines



CRT-1500 Canflex Rectangular Tank



Internal Baffels



CRT-1500 with 2" elbow & ball valve



Internal Baffels in action – 60m/h to 0 m/h Brake Stop

5.0 Shipping, Transportation and Packing *OPTIONS*

OPTION 1:



OPTION 2:

Shipping/Storage Container (marine-grade aluminum)

PART # ALCNT2

Characteristics:

- Two screened air vents
- Cable hoist lifting points (8)
- Fork lift slots on all sides
- Fold down and removable side door
- Locking lid
- 2" bottom drain w/ male camlock
- Aluminum Container Accessory Kit (ALCNT-KIT 2)
- OD: 1.62m X 1.62m X 1.35m High
(64" X 64" X 53.5" High)
- Volume: 2.83 m3 (100 ft3)
- Weight: 235 Kg (520 lb); WLL: 2900 Kg (6400 lbs)
- Dimensions: 45x48x29"H
(1.14m X1.21m X 0.73m H)



6.0 Labels

- Size and function of all aluminum fittings (i.e., FILL/DRAIN ; DRAIN ,VENT)
- Safety and Warning Labels
- CANFLEX ID label screened with Serial Number and Tank capacity
- Label screened on opposite sides with either Customer Name

7.0 Certifications & Pressure Test

- Each Tank is pressure tested according to our Quality Management System ISO-9001-2015
- CANFLEX (USA) INC operates a Quality Management System which complies with the requirements of ISO 9001-2015. CANFLEX (USA) INC holds Certificate No: FM 517957

Specifications

MODEL	CAPACITY	WIDTH	LENGTH	HEIGHT	FILL / OFFLOAD Quantity	VENT Quantity
	m ³ / Liters Gallons USA	m inches	m inches	m inches		
CRT-1500	5.67 / 5678	1.72	5.48	0.61	1	1
	1,500	68	216	24		

FUEL rated fittings:

FLANGES: Anodized aluminum with Stainless Steel fasteners
 CAMLOCK: (Cam & Groove quick coupling): Anodized Aluminum
 Ball Valve: rated for fuel
 Gaskets: *BUNA N* (Fuel)

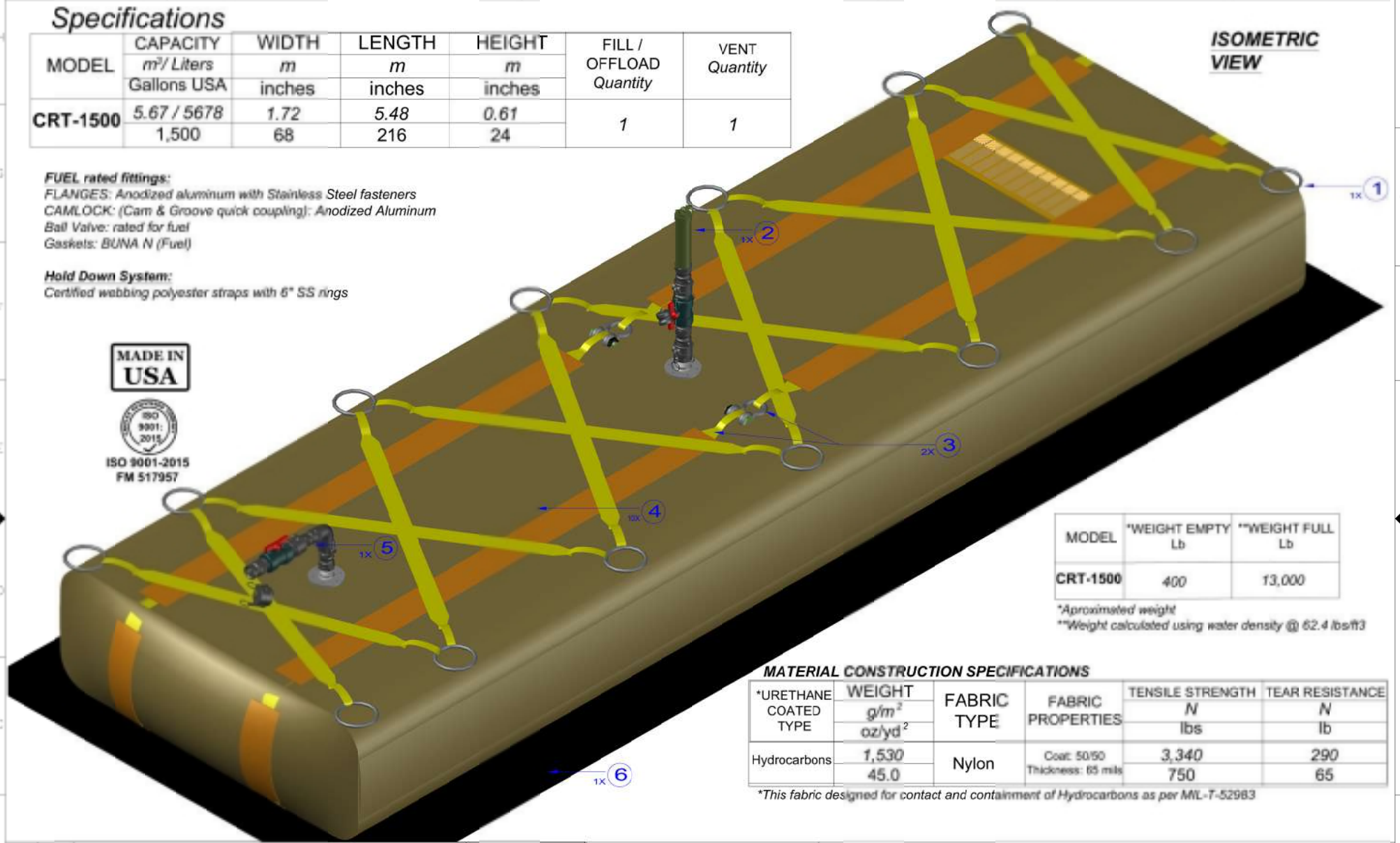
Hold Down System:

Certified webbing polyester straps with 6" SS rings



ISO 9001-2015
FM 517957

ISOMETRIC VIEW



MODEL	*WEIGHT EMPTY Lb	**WEIGHT FULL Lb
CRT-1500	400	13,000

*Approximated weight
 **Weight calculated using water density @ 62.4 lbs/ft³

MATERIAL CONSTRUCTION SPECIFICATIONS

*URETHANE COATED TYPE	WEIGHT	FABRIC TYPE	FABRIC PROPERTIES	TENSILE STRENGTH	TEAR RESISTANCE
	g/m ² oz/yd ²			N lbs	N lb
Hydrocarbons	1,530 45.0	Nylon	Coat: 50/50 Thickness: 65 mils	3,340 750	290 65

*This fabric designed for contact and containment of Hydrocarbons as per ML-7-52983

ITEM NO.	QTY. REQD.	DESCRIPTION	PART #
1	1	CERTIFIED 3" WEBBING STRAPS WITH "D" SS rings ASSY	3" X 6SS/1500
2	1	PRESSURE RELEASE - VENT & SPARK ARRESTOR W/ VALVE (MIL SPECS)	SPRK/2X10/BV
3	2	LATERAL 3" CERTIFIED WEBBING W/ 5/8" SAFETY SHACKLE	3" POLY/ SKL-063
4	10	TEST TABS MADE OF PATTERN MATERIAL	TEST/TAB
5	1	2" OFFLOAD / FILL PORT - BALL VALVE, ELBOW W/ CAMLOCKS & CAP	20BV/20CAL/FXB
6	1	ABRASION / GROUND SHEET (18oz PVC)	GS/234X86
NOT SHOWN	1	SUFFLE SYSTEM- RADIAL & LONGITUDINAL	BFL/1500LXR
NOT SHOWN	1	CLIP-LOK WOOD BOX- STORAGE & TRSPORATION (48X45X29")	CFX1



**PROJECT: RECTANGULAR SHAPED TANK FOR
 MTVR or LVSR Vehicle
 "NAVFAC"**

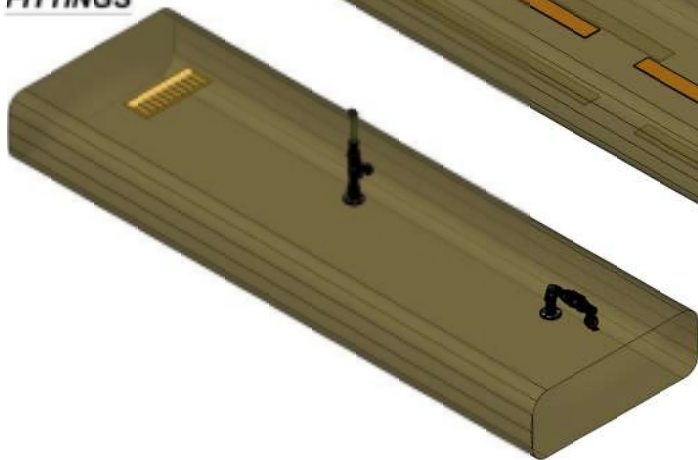
SCALE: N.T.S
 DATE: 12/03/2019

CRT-1500

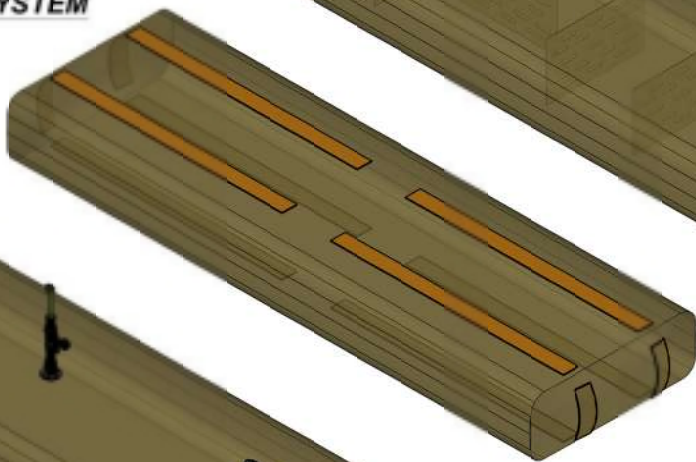
DRAWN: F.Y. DRWG # 0820-01
 REVISED: 12/02/2020

CANFLEX USA INC. PO BOX 1014 , 412 30th St , Anacortes,WA,98221,USA
 Tel:(206)282-8233 ; Web: www.canflexinc.com

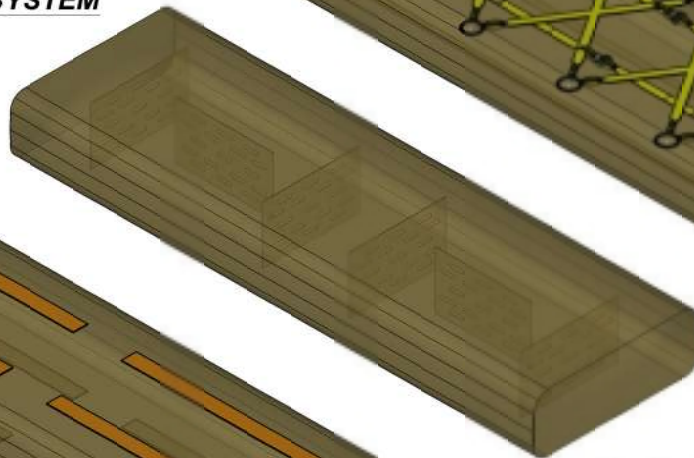
BLADDER & FITTINGS



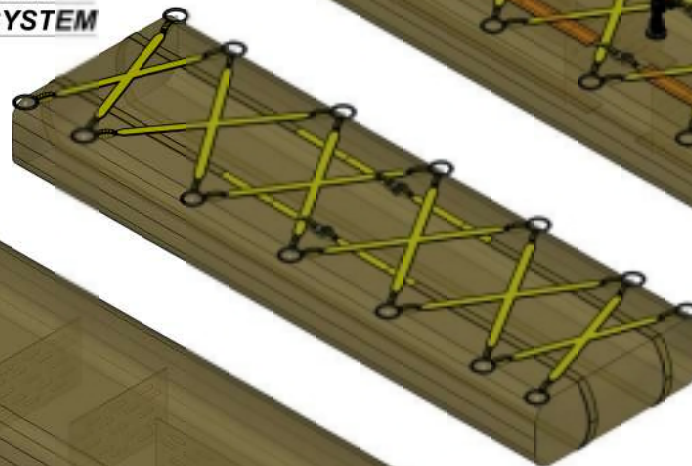
POCKET SYSTEM



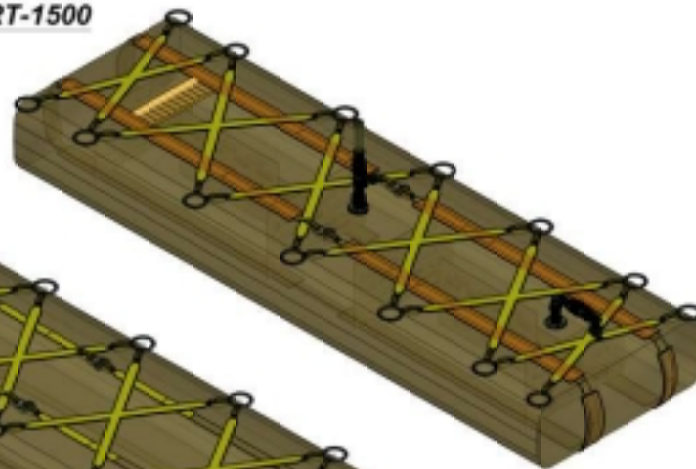
BAFFLE SYSTEM



STRAPS SYSTEM



CRT-1500



Specifications

MODEL	CAPACITY	WIDTH	LENGTH	HEIGHT	FILL / OFFLOAD Quantity	VENT Quantity
	m ³ / Liters Gallons USA	m inches	m inches	m inches		
CRT-1500	5.67 / 5678	1.72	5.48	0.61	1	1
	1,500	68	216	24		

MATERIAL CONSTRUCTION SPECIFICATIONS

*URETHANE COATED TYPE	WEIGHT	FABRIC TYPE	FABRIC PROPERTIES	TENSILE STRENGTH	TEAR RESISTANCE
	g/m ² oz/yd ²			N lbs	N lb
Hydrocarbons	1,530	Nylon	Coat: 50/50 Thickness: 65 mils	3,340	290
	45.0			750	65

*This fabric designed for contact and containment of Hydrocarbons as per MIL-T-52983

MODEL	**WEIGHT EMPTY Lb	**WEIGHT FULL Lb
CRT-1500	400	13,000

*Approximated weight

**Weight calculated using water density @ 62.4 lbs/ft³



**PROJECT: RECTANGULAR SHAPED TANK FOR
MTVR or LVSR Vehicle
"NAVFAC"**

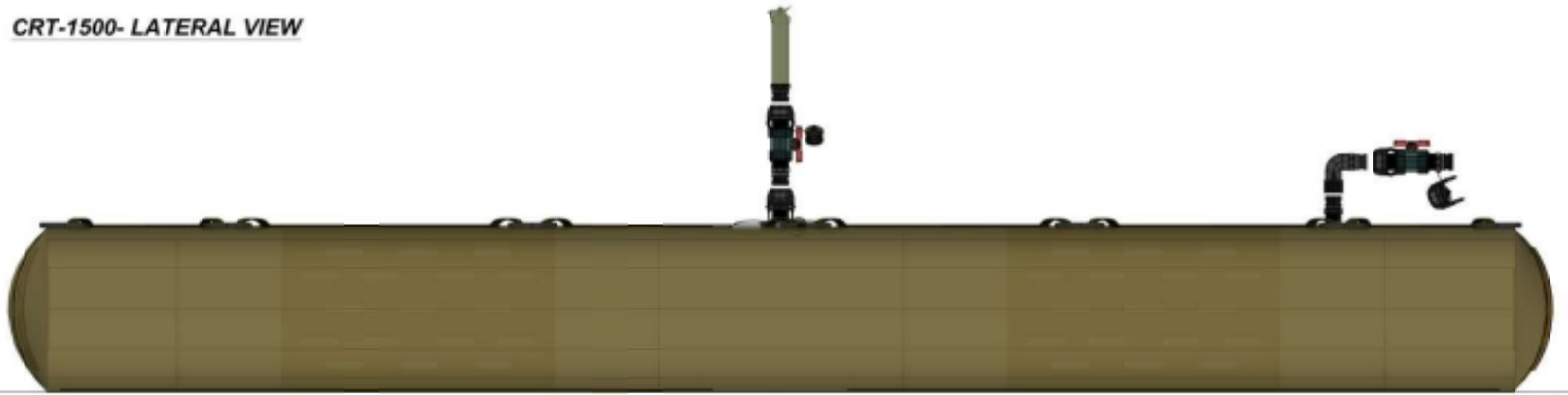
SCALE: N.T.S
DATE: 12/03/2019

CRT-1500

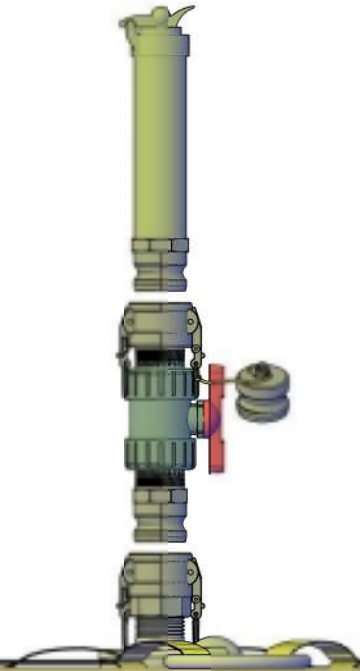
DRAWN: F.Y. DRWG #: 0820-02
REVISED: 12/02/2020

CANFLEX USA INC. PO BOX 1014 , 412 30th St , Anacortes,WA,98221,USA
Tel:(206)282-8233 ; Web: www.canflexinc.com

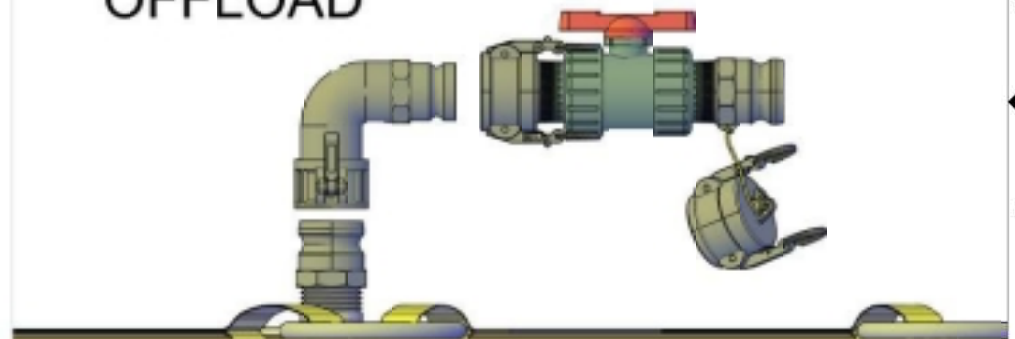
CRT-1500- LATERAL VIEW



VENT



**FILL /
OFFLOAD**



**FITTINGS
DETAIL**



**PROJECT: Fitting Arrangement
RECTANGULAR SHAPED TANK FOR
MTVR or LVSr Vehicle
"NAVFAC"**

SCALE: N.T.S
DATE: 12/02/2020

CRT-1500

DRAWN: F.Y. DRWG #1120-25
REVISED:

**CANFLEX USA INC. PO BOX 1014 , 412 30th St , Anacortes,WA,98221,USA
Tel:(206)282-8233 ; Web: www.canflexinc.com**