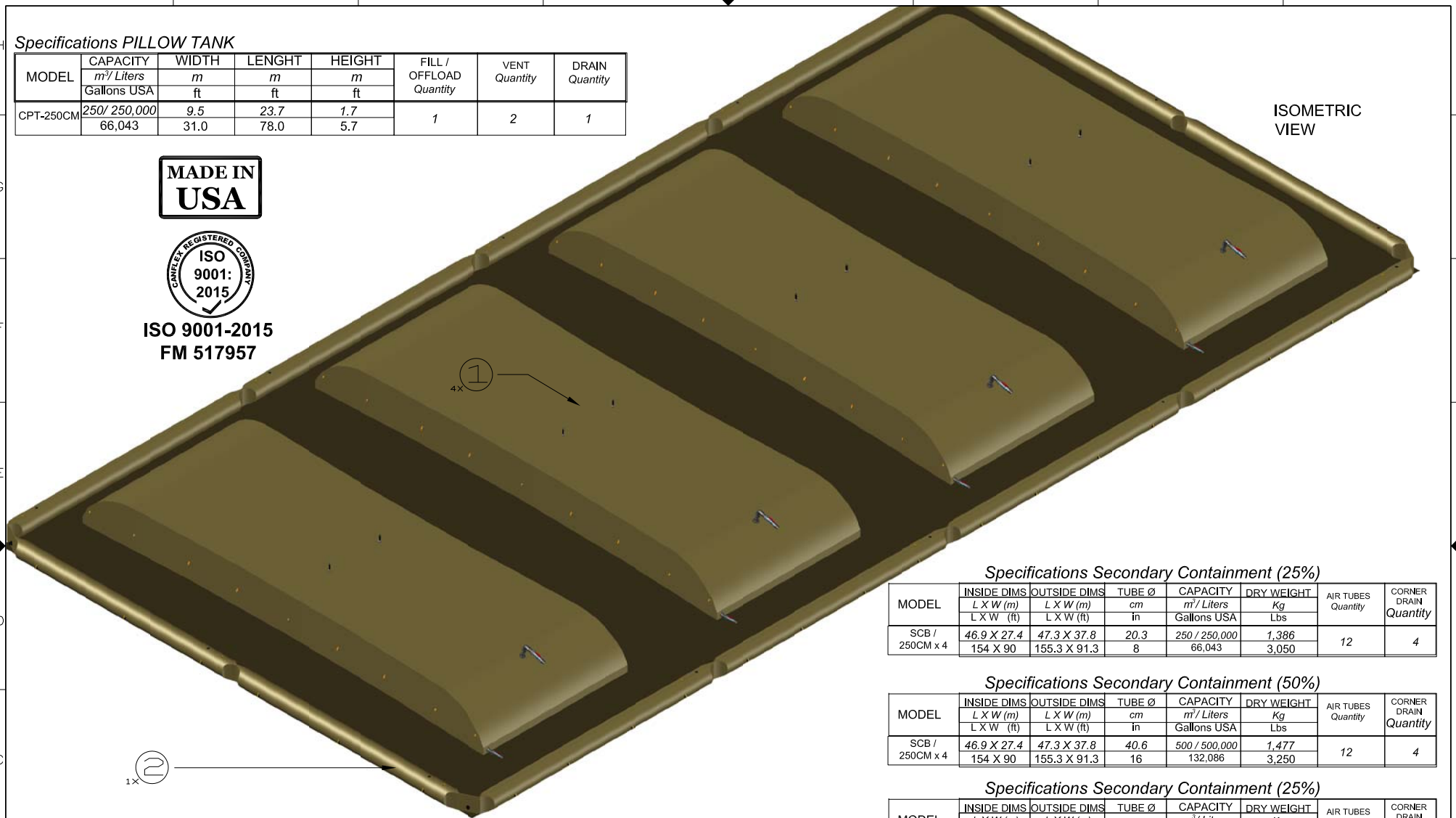


**Specifications PILLLOW TANK**

MODEL	CAPACITY	WIDTH	LENGHT	HEIGHT	FILL / OFFLOAD Quantity	VENT Quantity	DRAIN Quantity
	m <sup>3</sup> / Liters Gallons USA	m ft	m ft	m ft			
CPT-250CM	250/ 250,000	9.5	23.7	1.7	1	2	1
	66,043	31.0	78.0	5.7			



**ISO 9001-2015  
FM 517957**



ISOMETRIC VIEW

**Specifications Secondary Containment (25%)**

MODEL	INSIDE DIMS	OUTSIDE DIMS	TUBE Ø	CAPACITY	DRY WEIGHT	AIR TUBES Quantity	CORNER DRAIN Quantity
	L X W (m) L X W (ft)	L X W (m) L X W (ft)	cm in	m <sup>3</sup> / Liters Gallons USA	Kg Lbs		
SCB / 250CM x 4	46.9 X 27.4	47.3 X 37.8	20.3	250 / 250,000	1,386	12	4
	154 X 90	155.3 X 91.3	8	66,043	3,050		

**Specifications Secondary Containment (50%)**

MODEL	INSIDE DIMS	OUTSIDE DIMS	TUBE Ø	CAPACITY	DRY WEIGHT	AIR TUBES Quantity	CORNER DRAIN Quantity
	L X W (m) L X W (ft)	L X W (m) L X W (ft)	cm in	m <sup>3</sup> / Liters Gallons USA	Kg Lbs		
SCB / 250CM x 4	46.9 X 27.4	47.3 X 37.8	40.6	500 / 500,000	1,477	12	4
	154 X 90	155.3 X 91.3	16	132,086	3,250		

**Specifications Secondary Containment (25%)**

MODEL	INSIDE DIMS	OUTSIDE DIMS	TUBE Ø	CAPACITY	DRY WEIGHT	AIR TUBES Quantity	CORNER DRAIN Quantity
	L X W (m) L X W (ft)	L X W (m) L X W (ft)	cm in	m <sup>3</sup> / Liters Gallons USA	Kg Lbs		
SCB / 250CM x 4	46.9 X 27.4	47.3 X 37.8	78.7	1000 / 10000,000	1,660	12	4
	154 X 90	155.3 X 91.3	31	264,170	3,650		

ITEM NO.	QTY. REQD.	DESCRIPTION	PART #
1	4	250m3 (67,000 gal) PILLLOW TANK	CPT-250CM
2	1	SECONDARY CONTANMENT BERM for 4 x CPT-250CM	SCB-250CM X 4

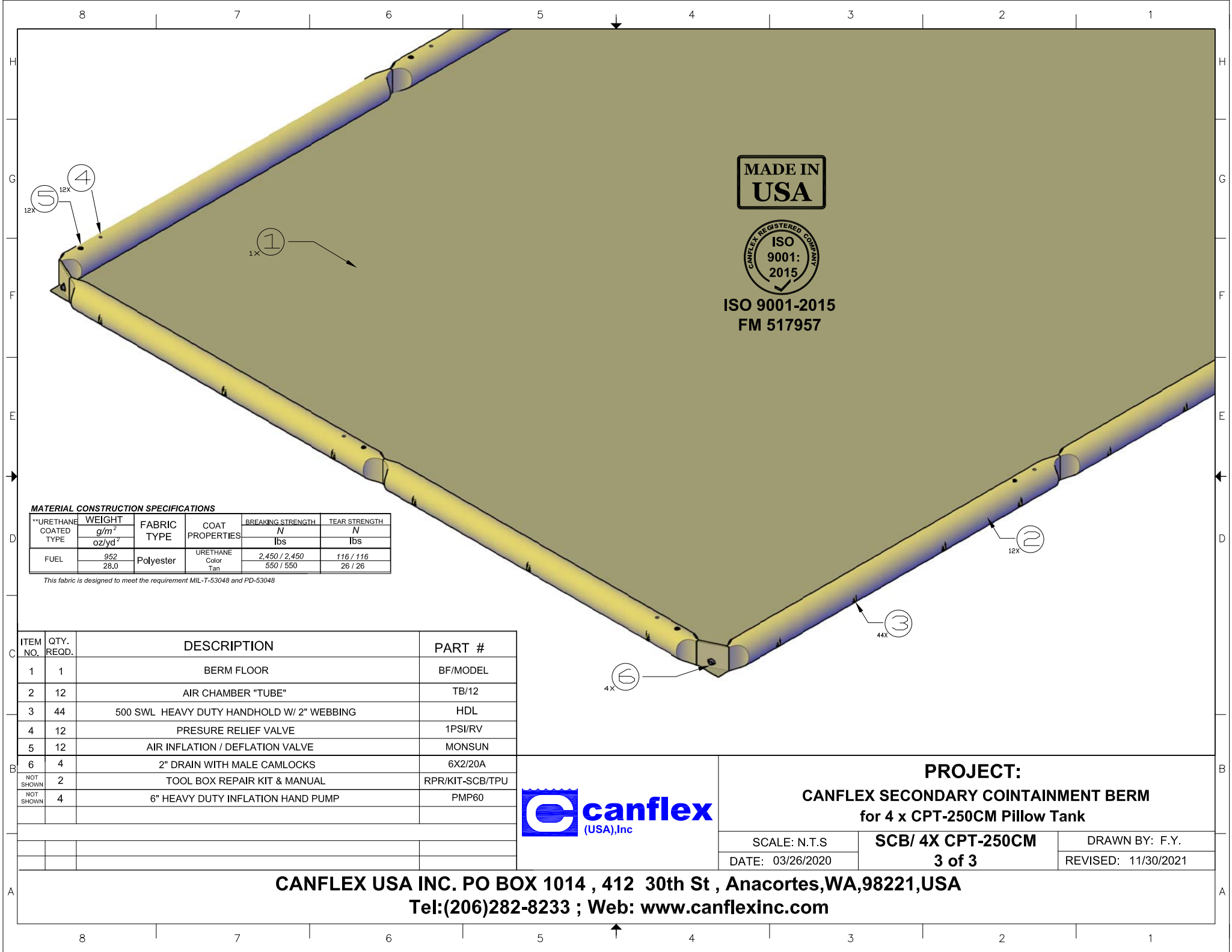


**PROJECT:**  
**CANFLEX SECONDARY COINTAINMENT BERM**  
**for 4 x CPT-250CM Pillow Tank**

SCALE: N.T.S      **SCB/ 4X CPT-250CM**      DRAWN BY: F.Y.  
DATE: 03/26/2020      **3 of 3**      REVISED: 11/30/2021

**CANFLEX USA INC. PO BOX 1014 , 412 30th St , Anacortes,WA,98221,USA**  
**Tel:(206)282-8233 ; Web: www.canflexinc.com**





**MADE IN USA**



**ISO 9001-2015  
FM 517957**

**MATERIAL CONSTRUCTION SPECIFICATIONS**

**URETHANE COATED TYPE	WEIGHT	FABRIC TYPE	COAT PROPERTIES	BREAKING STRENGTH	TEAR STRENGTH
	g/m <sup>2</sup>			N	N
	oz/yd <sup>2</sup>			lbs	lbs
FUEL	952 28.0	Polyester	URETHANE Color Tan	2,450 / 2,450 550 / 550	116 / 116 26 / 26

*This fabric is designed to meet the requirement MIL-T-53048 and PD-53048*

ITEM NO.	QTY. REQD.	DESCRIPTION	PART #
1	1	BERM FLOOR	BF/MODEL
2	12	AIR CHAMBER "TUBE"	TB/12
3	44	500 SWL HEAVY DUTY HANDHOLD W/ 2" WEBBING	HDL
4	12	PRESURE RELIEF VALVE	1PSI/RV
5	12	AIR INFLATION / DEFLATION VALVE	MONSUN
6	4	2" DRAIN WITH MALE CAMLOCKS	6X2/20A
NOT SHOWN	2	TOOL BOX REPAIR KIT & MANUAL	RPR/KIT-SCB/TPU
NOT SHOWN	4	6" HEAVY DUTY INFLATION HAND PUMP	PMP60



**PROJECT:**  
**CANFLEX SECONDARY COINTAINMENT BERM**  
**for 4 x CPT-250CM Pillow Tank**

SCALE: N.T.S	<b>SCB/ 4X CPT-250CM</b>	DRAWN BY: F.Y.
DATE: 03/26/2020	<b>3 of 3</b>	REVISED: 11/30/2021

**CANFLEX USA INC. PO BOX 1014 , 412 30th St , Anacortes,WA,98221,USA**  
**Tel:(206)282-8233 ; Web: www.canflexinc.com**