

**Specifications for Model CRT-2200 & CRT-2900
CANFLEX Rectangular Shaped Tanks
Project: Floor Load Test Water Bags**

1.0 General Construction

The material used for the fabrication of the CANFLEX Rectangular Tank (CRT) meets the requirements of MIL-B-53067 (ME); tested and certified by NSF International under NSF/ANSI 61 for containment of Potable Water, Vegetable Oil, Fresh Water, Oily water, Gray Water / Black Water. This fabric has a total weight of 37.0 oz/sq yd (1258 g/ m²), with the strength characteristics shown in Table-2 below. All seams used to construct the CPT are R/F welded with a 2.5" and 4" die. **No sewing or gluing shall be used.** The resulting seam strength of the welds is equal to or greater than the strength of the parent fabric.

Table 1 Characteristics for CANFLEX “Rectangular Shaped Tank”

Model	Capacity	Filled Dimension			Weight PSF
		W	L	H	
	m ³ / Liters	m	m	m	Lb
	Gallons US	ft	ft	ft	
CPT-2200	8.32 / 8320	1.52	5.52	1.0	200
	2,200	5.0	18.125	3.3	
CPT-2900	10.9/ 10,977	1.82	6.0	1.0	200
	2,900	6.0	20.0	3.3	

2.0 Fittings and Items (bolted , welded)

The “CRT” fittings are made from cast anodized, marine-grade aluminum. Nuts, bolts, and washers integral to the fittings are made of stainless steel. The fittings will be bolted through the main body of the Pillow Tank to a cast marine-grade, aluminum backing plate. Each fitting will be mounted on a patch having a greater diameter than the outside diameter of the particular fitting.

- One 2” NPT male connection c/w 2” male cam-lock conn. It is located at the top end of the tank. **Purpose: Filling / Offloading connection**
- One 2” NPT male connection c/w 2” male camlock. It is located at the lower corner of the tank. **Purpose: Offloading connection. “Drain”**
- One 2” NPT male connection w/ female camlock. It is located at center top of the tank. **Purpose: Pressure release/ Vent**
- Pocketd / sleeves welded around the body of the tank. **Purpose: Enclosed and hold 2” polyester webbing straps**

**Table 2 - Material Strength Results
for Potable Water, Vegetable Oil, Fresh Water, Oily water, Gray Water/Black Water.**

1.0 BASE FABRIC

1.1	Base Fabric Weight	14.41 oz/yd ²	490 g/m ²
1.2	Fiber / Style	Nylon / Polyester	
1.3	Fabric Style	Woven	

2.0 COATED FABRIC

2.1	Total Weight	37 ±3 oz/yd ²	1,258 ±102 g/m ²
2.2	Coating Type	Urethane	
2.3	Coating Distribution	50 / 50	
2.4	Sealing Properties	<input checked="" type="checkbox"/> Dielectric	<input checked="" type="checkbox"/> Thermal

3.0 MATERIAL PROPERTIES

		<u>Standard</u>	<u>Metric</u>	ASTM TEST METHODS
3.1	Tensile Strength, 1" Strip			
	Warp	500 lbs	2,220 N	D751-B
	Fill	500 lbs	2,220 N	
3.2	Tear Strength, Tongue			
	Warp	35 lbs	156 N	D751-B (mod)
	Fill	35 lbs	156 N	
3.3	Puncture, Screwdriver	200 lbs	890 N	D751
3.4	Adhesion RF	30 lbs/in	52 N/cm	D751
3.5	Adhesion Thermal	30 lbs/in	52 N/cm	D751
3.6	Low Temp	-25 °F	-32 °C	D2136
3.7	High Temp, Cont/Interm.	160 / 180 °F	71 / 82 °C	D1204

This material meets or exceeds the requirements of MIL-B-53067 (ME); tested and certified by NSF International under NSF/ANSI 61

3.0 List of all unattached accessories included with the Tank

- 2 X 2" ball valve w/ male & female camlock connections
- 1 X 2" x 90° elbow female x male camlok connection.
- 1 X OPW spring loaded Vent as per MIL specs. Located across the center top of the tank.
Purpose: Pressure / Fluid release vent
- 6 x 2" polyester webbing straps around perimeter of the tank
Purpose: Added lateral strength for seismic concerns
- 6 X 5/8" Safety shackle with bolt & cotter pin
Purpose: Hold 2" webbing straps mentioned above
- Shipping / Storage Carry Bag (details below- Section 4.0)
- One maintenance kit that contains following items:
 - 1 x 16 oz. Can PVC patch cement
 - 1 x 24" x 24" coated bladder material
 - 2 x 10" circles same
 - 4 x 7" circles same
 - 1 knife
 - 1 roller for patch cement



CRT-4000 Canflex Rectangular Tank



CRT-4000 Canflex Rectangular Tank- 4,000 gal

4.0 Shipping:

Carry / Storage Bag

The CANFLEX Pillow Tank “CPT” is shipped with a carry bag, capable of housing the tanks and all its accessories. It is made of 18 oz/sqyd PVC coated polyester fabric

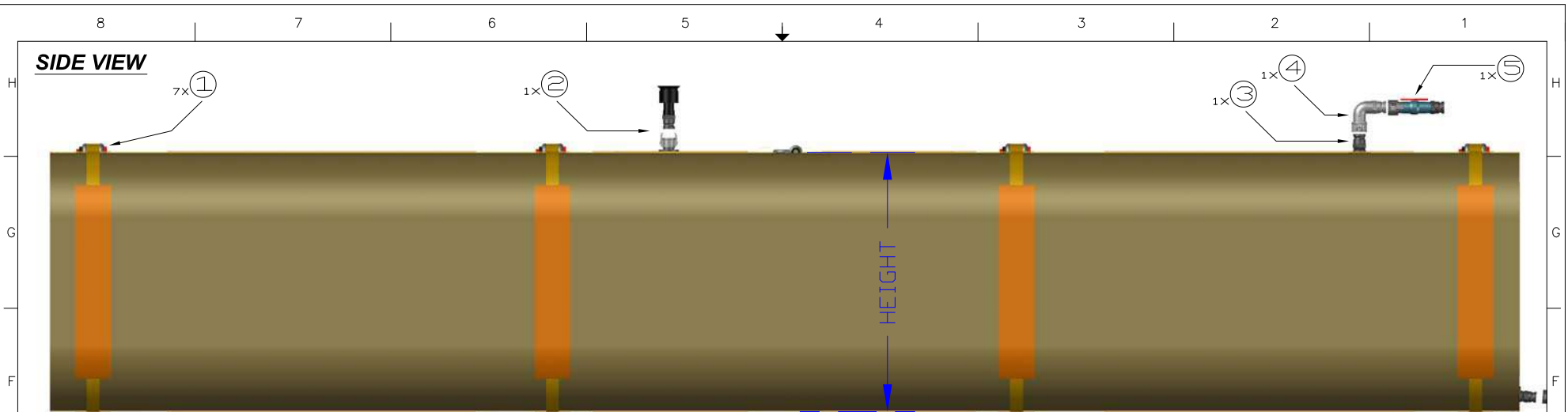


5.0 Labels

- Size and function of all aluminum fittings (i.e., FILL/DRAIN ; DRAIN ,VENT)
- Safety and Warning Labels
- CANFLEX ID label screened with Serial Number and Tank capacity
- Label screened on opposite sides with either Customer Name

6.0 Certifications & Pressure Test

- Each Tank is pressure tested according to our Quality Management System ISO-9001-20015
- CANFLEX (USA) INC operates a Quality Management System which complies with the requirements of ISO 9001-2015. CANFLEX (USA) INC holds Certificate No: FM 517957



Specifications

MODEL	CAPACITY	WIDTH	LENGHT	HEIGHT	FILL / OFFLOAD Quantity	VENT & DRAIN Quantity	Weight PSF
	m ³ / Liters Gallons USA	m ft	m ft	m ft			
CRT-2200	8.32/ 8,320	1.52	5.52	1.0	1	1 & 1	200
	2,200	5.0	18.125	3.3			
CRT-2900	10.9/ 10,977	1.82	6.0	1.0	1	1 & 1	200
	2,900	6.0	20.0	3.3			

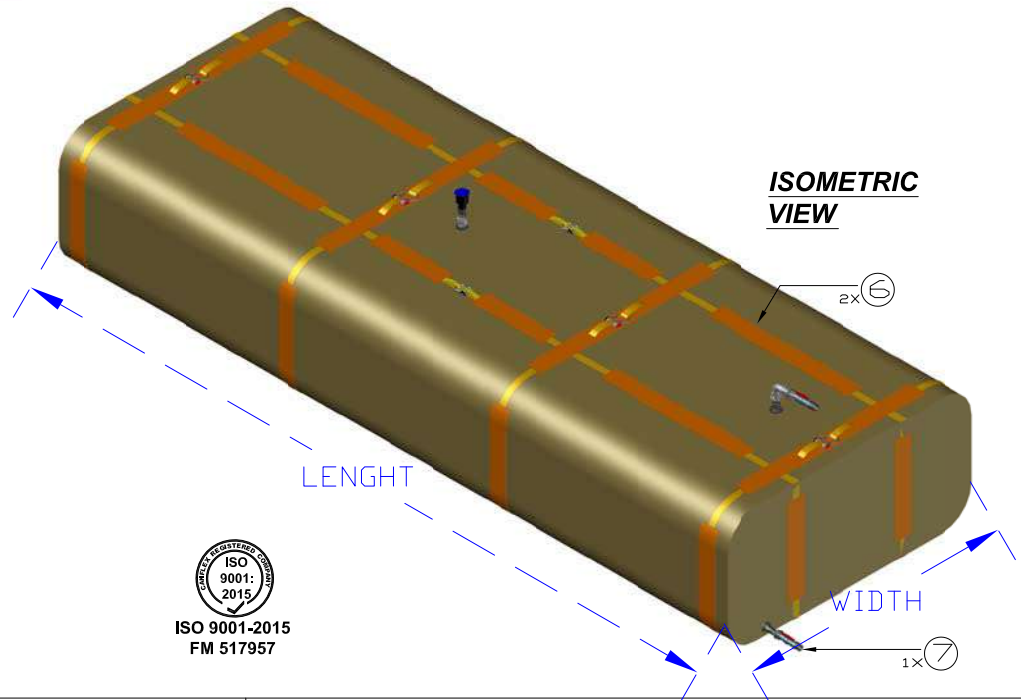
MATERIAL CONSTRUCTION SPECIFICATIONS

*URETHANE COATED TYPE	WEIGHT	FABRIC TYPE	FABRIC PROPERTIES	TENSILE STRENGTH	TEAR RESISTANCE
	g/m ² oz/yd ²			N (1inch strip) lbs (1inch strip)	N lb
WATER	1,258	Nylon	Coat: 50/50	2,220	156
	37.0			500	35

*This fabric meets the requirements of MIL-B- 53067 (ME); tested and certified by NSF International under NSF/ANSI Standar 61. For containment of Potable Water, Vegetable Oil, Fresh Water, Oily Water, Graywater / Blackwater, Sewage, ..etc

FITTINGS:

FLANGES: Anodized marine aluminum w/ stainless steel fasteners.
CAMLOCK: (Cam & Groove quick coupling): Anodized marine aluminum



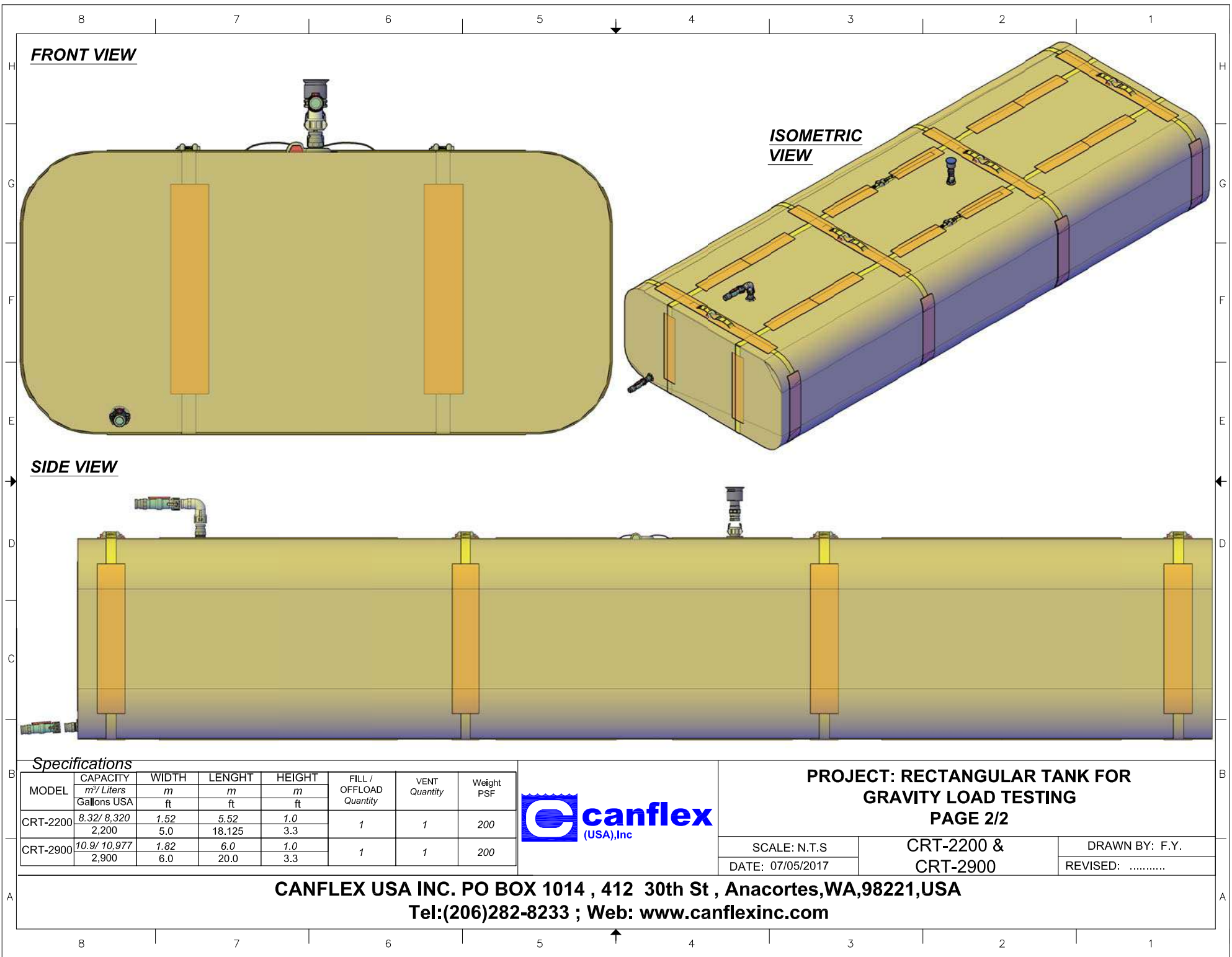
ITEM NO.	QTY. REQD.	DESCRIPTION	PART #
1	4	2" RADIAL WEBBING STRAPS W/ SHACKLE	POLY2-R-TANK
2	1	PRESSURE RELIEF - VENT ("OPW" MIL SPECS)	523V-1100
3	1	2" NPT CONN / MALE CAMLOCK - FILL/ OFFLOAD	6X2FLN/20A
4	1	2" 90 DEG ELBOW- MALE & FEMALE CAMLOCKS	20CAL
5	1	2" PVC BALL VALVE W/ MALE & FEMALE CAMLOCKS (FILL)	BV/PVCX20FX20B
6	2	2" LONGITUDINAL WEBBING STRAPS W/ SHACKLE	POLY2-L-TANK
7	1	2" PVC BALL VALVE W/ MALE & FEMALE CAMLOCKS (DRAIN)	BV/PVCX20FX20B
NOT SHOWN	1	SHIPPING /STORAGE WOOD BOX - CLIP LOK STYLE (48X45X53"H)	CFX2
NOT SHOWN	1	TOOL BOX REPAIR KIT W/ OPERATIONAL MANUAL	RPR/KIT-CPT-PW



PROJECT: RECTANGULAR TANK FOR GRAVITY LOAD TESTING
PAGE 1/2

SCALE: N.T.S	CRT-2200 & CRT-2900	DRAWN BY: F.Y.
DATE: 04/14/2020		REVISED:

CANFLEX USA INC. PO BOX 1014 , 412 30th St , Anacortes,WA,98221,USA
Tel:(206)282-8233 ; Web: www.canflexinc.com



FRONT VIEW

ISOMETRIC VIEW

SIDE VIEW

Specifications

MODEL	CAPACITY		WIDTH	LENGTH	HEIGHT	FILL / OFFLOAD Quantity	VENT Quantity	Weight PSF
	m ³ /Liters	Gallons USA	m	m	m			
CRT-2200	8.32/ 8,320		1.52	5.52	1.0	1	1	200
	2,200		5.0	18.125	3.3			
CRT-2900	10.9/ 10,977		1.82	6.0	1.0	1	1	200
	2,900		6.0	20.0	3.3			



PROJECT: RECTANGULAR TANK FOR GRAVITY LOAD TESTING
PAGE 2/2

SCALE: N.T.S	CRT-2200 & CRT-2900	DRAWN BY: F.Y.
DATE: 07/05/2017		REVISED:

CANFLEX USA INC. PO BOX 1014 , 412 30th St , Anacortes,WA,98221,USA
Tel:(206)282-8233 ; Web: www.canflexinc.com