



SEA BOOM OCB-2200

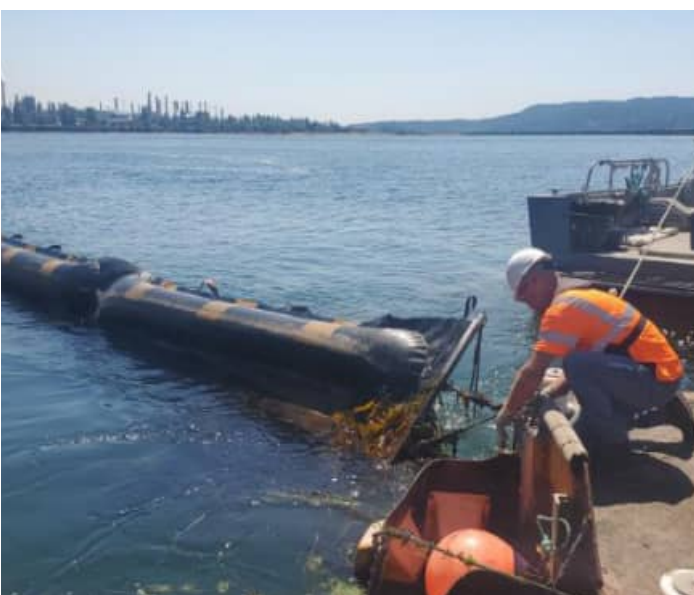
Heavy Duty Inflatable Oil Containment Boom

Canflex Sea Boom OCB-2200 is designed for oil spill operations in the deep sea and offshore areas. Sea Booms feature simple, rapid inflation, and high buoyancy to weight ratios giving them excellent wave conformance in demanding conditions. Each section of the oil curtain boom is segmented into individual inflatable chambers ensuring that the boom will maintain positive buoyancy and continue to float in the event of any damage.

The Sea Boom is made from heavy duty PU-coated polyester fabric. It is both strong and lightweight. This durable polyurethane material has exceptional tensile strength, high abrasion resistance and tear resistance. Its smooth surface resists oil, chemicals, and marine growth, in addition to withstanding severe weather and UV light. All seams and unions are high frequency welded, maintaining the excellent mechanical properties of the fabric, and ensuring air and water tightness.

TOP FEATURES

- Rapid inflation and deflation
- Low maintenance and easy to clean
- Handles on each section for easy pick up
- Excellent wave conformance and oil retention characteristics
- Independent, segmented buoyancy chambers
- Corrosion resistant ASTM style marine grade aluminum connectors
- Heavy duty galvanized steel ballast chain
- Marine grade shipping / storage crate (Optional)



SEABOOM APPLICATIONS

- Spill Response
- Hazmat Operations
- Military Operations
- Potable (drinking) Water Tank
- Disaster Relief
- Fuel Storage
- Firefighting
- Forestry Service
- Wastewater
- Portable Storage
- Remote Storage
- Gray Water Storage
- Portable Water Tank
- Chemical Storage
- Remediation Projects



SEABOOM OCB-2200 TECHNICAL INFORMATION

| | Imperial | Metric |
|---|---|---------|
| Height (Deflated): | 87 in | 2.2 m |
| Freeboard: | 33 in | .83 m |
| Draft: | 37 in | .94 m |
| Section Lengths: | 50 m, 100m, 200 m 100 ft, 164 ft, 328 ft | |
| Ballast Galvanized Chain: | 1/2" in | 12.7 mm |
| Chain | Exposed | |
| Chamber Length: | 177 in / 4.5 m | |
| End Connector: | ASTM or Pin | |
| Weight with Chain: | 11.4 lb/ft / 17.0 kg/m | |
| Material Weight: | Urethane - 77 oz/yd ² / 2,618 g/m ² | |
| Tensile Strength | 1300 lbs / 5,780 N | |
| High Temperature - Heat Resistance | +160 def F / +80 deg C | |
| Low Temperature - Cold Track | -51 def F / -60 deg C | |
| Color | Black or Orange | |
| Skirt Holes: | 3/4" in | |
| Recommended application | Open Waters/Terminals | |