



**Marine Terminals, Refineries,  
Harbors**



## **PERMABOOM – 20**

### **Permanent Fence Boom**

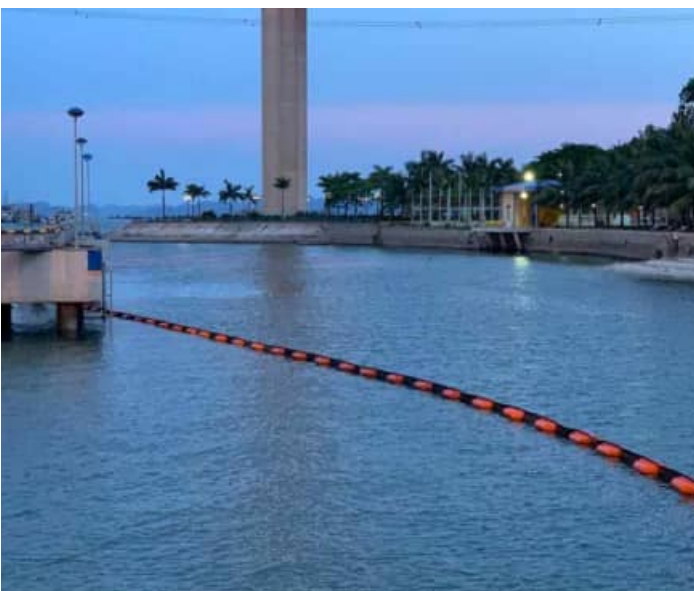
PermaBoom features a vertical membrane constructed of heavy-duty PVC-coated polyester belting. This membrane serves as both the draft and freeboard of the boom, preventing the passage of floating pollutants and debris.

Attached to either side of the membrane are solid floats that provide buoyancy to the boom. Floats are constructed of one-piece rotational molded polyethylene and offer a high degree of buoyancy, stability and durability. Foam filling of the floats offers added insurance against loss of buoyancy should floats become damaged due to impact.

Boom is designed for continuous, long-term use, and is of rugged construction, complete with UV and marine growth inhibitors.

## TOP FEATURES

- Permanent installations
- Heavy duty boom membrane, minimal maintenance requirements
- Rotary molded, foam filled heavy duty boom floats
- Accessories include tidal compensators, and dock seal systems
- Corrosion resistant ASTM style marine grade aluminum connectors
- Long service life and low maintenance
- Custom sizes and optional ballast (lead or chain) available



**PERMABOOM - 20**

	<b>Imperial</b>	<b>Metric</b>
<b>Freeboard</b>	9.5 in	240 mm
<b>Draft</b>	10.25 in	260 mm
<b>Length</b>	82 ft	25 m
<b>End Connectors</b>	Universal style extruded marine grade aluminium connector	
<b>Skirt Material</b>	PVC-coated polyester conveyor belting, UV and marine growth inhibitors included	
<b>Skirt Weight</b>	170 oz/yd <sup>2</sup>	5770 g/m <sup>2</sup>
<b>Skirt Color</b>	Black	
<b>Float</b>	Fully enclosed, rotary molded high density polyethylene float shells filled with closed cell polyurethane foam	
<b>Number of Floats</b>	30	
<b>Float Weight</b>	8.8 lbs	4 kg
<b>Float Color</b>	Orange	
<b>Float Size</b>	34.75 x 9.75 x 9.25 in	889 x 248 x 235 mm
<b>Float Mounting</b>	Bolted through molded elliptical holes to allow stretching of skirt under tension	
<b>Additional Ballast</b>	None	
<b>Boom Weight</b>	6.2 lbs/ft	9.3 kg/m
<b>Buoyancy</b>	27.6 lbs/ft	41.2 kg/m
<b>Buoyancy/Weight Ratio</b>	4.5:1	
<b>Tensile Strength</b>	36,000 lbs	16,365 kg