



## LOAD CELLS

### Features of JCM Gold telemetry load links

- Full O’ring sealing
- Lightweight aerospace aluminum
- Flush covers
- Full traceable calibration
- Temperature compensated
- 360° radio output
- Units available from 2.5 to 500 Tonne
- 1 year battery life option on load link

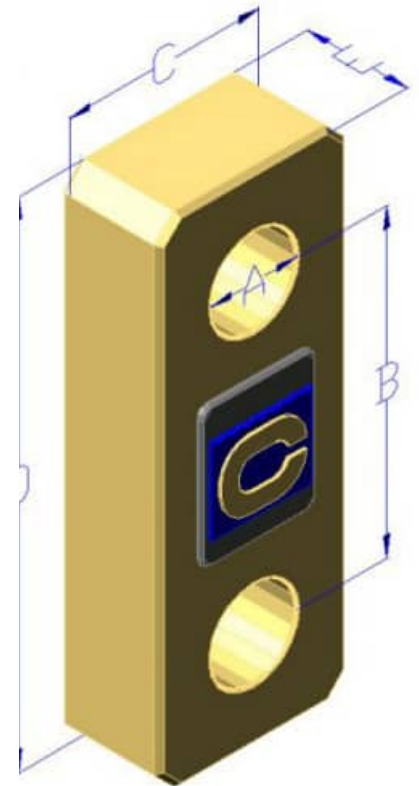
**Load Cells Capacities:**  
5 to 500 Tonnes

### Features of ALRS2 electronics

- 250 meter range
- Constant peak and actual load continually displayed
- 5 units of measurement, Te, Kgs, lbs, US Tons, kN
- Internal antenna
- Display light for easy viewing
- Fast update speed
- Simple battery change out
- Optional logging package
- Easy to use

## LOAD CELLS

MODEL	Capacity	A (∅)	B	C	D	E	Weight
	Tonne	mm	mm	mm	mm	mm	kg
	(Metric)	in	in	in	in	in	lbs
JCM-5LC	5	26	226	130	293	39	2.6
		1.02	8.89	5.11	11.53	1.53	5.7
JCM-12.5LC	12.5	44	226	130	324	50	5.3
		1.73	8.89	5.11	12.75	1.96	11.7
JCM-25LC	25	55	290	136	430	61	7.1
		2.16	11.41	5.35	16.92	2.4	15.7
JCM-35LC	35	61	290	140	440	70	9.4
		2.4	11.41	5.51	17.32	2.75	20.7
JCM-50LC	50	75	304	170	480	85	15
		2.95	11.96	6.69	18.89	3.34	33
JCM-75LC	75	86	306	190	500	100	17
		3.38	12.04	7.48	19.68	3.93	37.5
JCM-100LC	100	100	346	194	556	124	26.1
		3.93	13.62	7.63	21.88	4.88	57.5
JCM-150LC	150	120	396	244	680	127	47.1
		4.72	15.59	9.6	26.77	5	104
JCM-200LC	200	132	442	280	784	150	79
		5.19	17.4	11.02	30.86	5.9	174
JCM-300LC	300	160	582	400	1000	150	177
		6.29	22.91	15.74	39.37	5.9	390
JCM-400LC	400	180	614	400	1098	200	245
		7.08	24.17	15.74	43.22	7.87	540
JCM-500LC	500	190	600	490	1100	200	322
		7.48	23.62	19.29	43.3	7.87	710



Units from 2.5 to 50 Tonne are supplied in an IP67 transit case, 75 to 500 Tonne units supplied in a hinged wooden transit crate, made with heat treated wood so ready for international shipping.